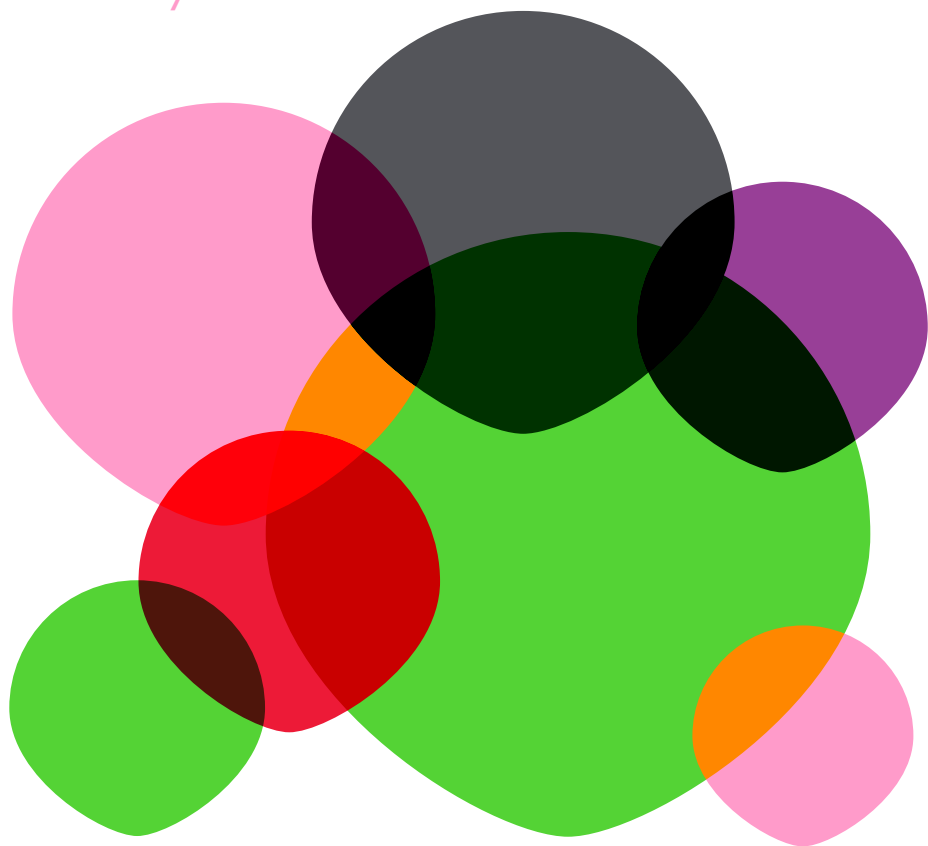


2-5 May 2014



# Bristol Art Weekender

Four days celebrating art across the city  
[www.bristolartweekender.co.uk](http://www.bristolartweekender.co.uk)

art that hurts  
art that stops sleep  
art that turns hearts inside out  
art that whispers  
art that sings  
art that bleeds  
art that binds  
art that stops a wound  
art that blocks a terror  
art that holds  
art that twists  
art that blinds falsehood  
art that dreams  
art that summons shivers  
art that spells truth  
art that won't forget  
art that cuts through  
art that aches  
art that shouts  
art that remembers  
art that waits  
art that slows time  
art that changes  
art that isn't art

Tim Etchells, *Art that (fragment)*, 2014

## Welcome

**... something extraordinary has just begun!**

This is the first time in Bristol that art organisations and artists have come together to stage a weekend celebration of art across this city. The Weekender is led by arts producer, Situations in collaboration with 16 other arts organisations and artist groups. Over these four days in May, you'll have the chance to discover exhibitions by leading and emerging artists, go behind the scenes at over 70 artists studios, explore new artworks in unexpected locations and attend one-off events. We hope that the Weekender might open up new and surprising encounters and lead you to explore our home city in unexpected ways.

### Plan your weekend

Flip to the back pages to tailor your visit to the events running throughout the weekend from a Sunday lecture by Jeremy Deller at John Wesley's historic Chapel to a bake in the temporary pavilion in Lockleaze.

### Follow our lead

We've come up with some suggested self-guided trails across the programme which open up unexpected connections between works and exhibitions. Go to the centrefold to pick up a trail and use the Bristol Art Map to find the locations.

### Meet the ambassadors

Spot the BAW distinctive T-shirt and you've spotted an ambassador. They haven't been hired to guard the artwork, but rather are there to help with information on the artists, directions to hidden gems and special events. Don't be shy – do ask their advice.

### Tell us what you think

It's our first year, so we're testing out with you how this works and we want to hear about what will stay with you, what you'd rather forget and how we could improve next year's programme. Look out for BAW postcards throughout the venues to give us your feedback.

Watch the Weekender's events unfold online  
**[www.bawblog.com](http://www.bawblog.com)**

Share your experience through social media  
**#baw2014**

Monday 5 May  
Go on an Art Hunt  
at the Lord Mayor's  
Chapel. See

p.21



Courtesy of the artist and Produzentengalerie, Hamburg

Annika Kahrs, *Playing to the Birds*, 2013, HD-film (still)

## A Concert for the Birds Annika Kahrs

Annika Kahrs invites you to take a seat amidst an audience of songbirds for an enchanting recital of one of Franz Liszt's best loved piano solos. Staged in one of Bristol's oldest and most intimate chapels, the birds will take up residence among the pews and listen to hourly performances, hearing the piano in imitation of birdsong with trills and tremolos resulting in an artful piece of musical story telling.

Friday 2 & Saturday 3 May, 12–6pm

Sunday 4 May, 1–6pm

Monday 5 May, 12–6pm

Performances take place every hour, on the hour. Please note this venue has restricted access. See website for details.

The Lord Mayor's Chapel  
Park Street, BSI 5TB  
[www.situations.org.uk](http://www.situations.org.uk)  
@situationsUK

A Situations project.

## Bad Brickwork Richard Woods

For his third solo exhibition at WORKS|PROJECTS, renowned British artist, Richard Woods will fill the gallery with *Bad Brickwork*. Woods' beautifully simple sculptures, made from wood and painted to resemble cartoon bricks, will contort across the gallery, their vibrant colours, bright white mortar and thick black edges a joyous celebration of the most mundane of building materials.

Friday 2 – Sunday 4 May, 12–5pm

Monday 5 May, 11am–5pm

Continues until Saturday 10 May

WORKS|PROJECTS  
Sydney Row, BSI 6UU  
[www.worksprojects.co.uk](http://www.worksprojects.co.uk)  
@WORKSPROJECTS



## Between Hello and Goodbye: the Secret World of Sarah Records

Arnolfini presents *Between Hello and Goodbye: The Secret World of Sarah Records*, a weekend celebrating the legacy of cult 90s Bristol record label Sarah Records. The weekend includes an exhibition of Sarah memorabilia including original artwork, sleeves, posters and fanzines, plus additional themed walks and activities.

Friday 2 – Monday 5 May, 11am–6pm

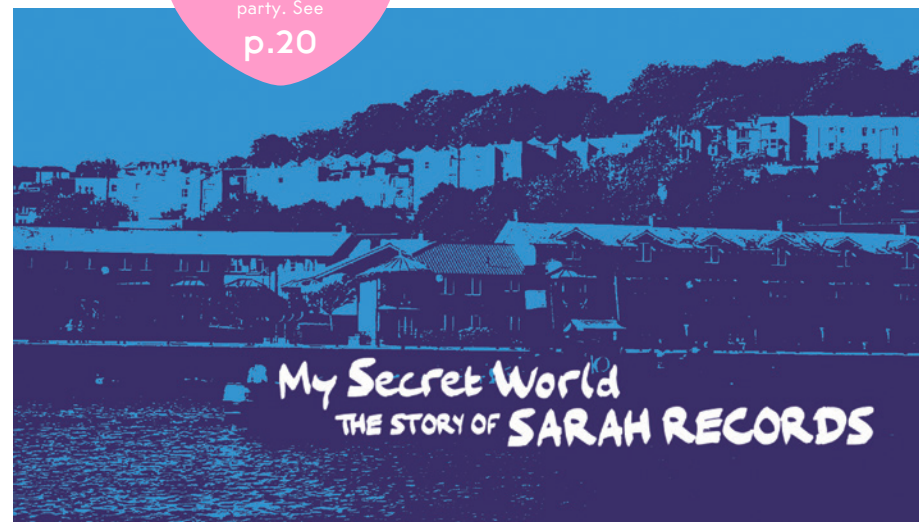
Arnolfini  
16 Narrow Quay, BSI 4QA  
[www.arnolfini.org.uk](http://www.arnolfini.org.uk)  
@ArnolfiniArts



In Conversation with Matt Haynes and  
Clare Wadd, Saturday 3 May, 5.30pm, £3

To book: [www.arnolfini.org.uk/whatson/sarah-records](http://www.arnolfini.org.uk/whatson/sarah-records) or call Box Office on  
0117 917 2300

Indie pop,  
Northern Soul and  
Motown classics –  
celebrate with us at the  
official Weekender  
party. See  
p.20



## BSDeathdrive A new public work by Sam Francis & Emma Lilwall

A new public work by Sam Francis & Emma Lilwall dispersed across 15 city locations. The Deathdrives (USB sticks) are permanently installed in public locations and at art organisations across Bristol. Accessed via a laptop (or mobile phone connector which can be borrowed from selected venues) you can drop, share and collect files and artwork. Each Deathdrive has a read-me file, map of locations and collectable posters. An anonymous off-line file-sharing network, BSDeathdrive is an interactive project which maps the creativity of the city.

Deathdrives are installed at key Art Weekender venues, look out for the Deathdrive map of locations. Limited edition DIY Deathdrive kits are available from selected arts organisations for you to create your own Deathdrive.

From Spring 2014 (permanent)  
Dispersed across the city – start at The Cube  
Microplex, 4 Princess Row, BS2 8NQ

[www.bsdeathdrive.tumblr.com](http://www.bsdeathdrive.tumblr.com)  
@bsdeathdrive #bsdeathdrive

## Children's Films

Gareth Moore

A vintage mobile cinema  
on the Harbourside

Screened in a 1960s cinema-bus, this film programme created by Gareth Moore and aimed exclusively at children offers a unique cinematic experience for 5–12 year olds. Children are invited to immerse themselves in the world of film with these playful 16mm shorts by seven international contemporary artists: Ulla von Brandenburg, Keren Cytter, Geoffrey Farmer, Julia Fereyr, and Harrell Fletcher, Mike Marshall, and Sylvain Saily. No adults allowed unless accompanied by a child.

Film duration is 20 minutes.

Saturday 3 May, 11am–5pm

The cinema is located in Brunel Square  
(next to ss Great Britain), BSI

Public Art (Now):  
'Sunday Service' with  
Jeremy Deller

p.20



Courtesy British Council, photo by Cristiano Corré

Jeremy Deller, *A good day for cyclists*, painted by Sarah Tynan

## English Magic

Jeremy Deller

Jeremy Deller represented the UK with *English Magic* at the 2013 Venice Biennale, the world's most prestigious contemporary art event. Don't miss this critically acclaimed exhibition in Bristol as it tours the UK for the first time in the Biennale's history. *English Magic* reflects the Turner Prize winning artist's interest in the diverse nature of British culture; its people, icons, folklore, history and politics.

Encounter a magical assembly of large-scale murals, drawings, photographs, film, and historical materials. Expect references to workers' strikes, the Iraq war, tax evasion, Range Rovers and Ziggy Stardust.

Friday 2 May, 10am–5pm

Saturday 3 – Monday 5 May, 10am–6pm

Continues until Sunday 21 September

Bristol Museum & Art Gallery  
Queens Road, BS8 1RL  
[bristolmuseums.org.uk](http://bristolmuseums.org.uk)  
@bristol\_museum



*English Magic* was commissioned by the British Council.  
The UK tour is supported by the Art Fund.



Karin Krommes, *Dance III*, oil on canvas

## Exploration

Karin Krommes, Geoff Diego  
Litherland and Jemma Appleby

Join Antlers Gallery in their latest temporary project space to explore the work of three contemporary artists who deal with ideas of technological advancement and its relationship with the 'romantic' landscape. Other original and editioned work by Antlers artists will also be available for viewing.

Friday 2 – Monday 5 May, 10am–6pm

Continues until Saturday 7 June

Antlers Gallery  
Purifier House, BSI 5AD  
[www.antlersgallery.com](http://www.antlersgallery.com)  
@AntlersGallery



Hamilton House present  
**Acapulco Space Shuttle**  
Panther Panther!

Panther Panther! brings to UK audiences Nueva Cumbia Latino culture through immersive environments, visual music and expanded cinema performances. Curated by Sean Redmond and Hamilton House Gallery 'Acapulco Space Shuttle' is a multi-projection audio-visual installation inspired by contemporary electronica from Latin America, psychedelic light shows and the experimental films of Oskar Fischinger. Throughout the night, the gallery's façade will be converted into a continuous dream sequence of light, colour and geometry, merging beautiful video postcards of natural and urban landscapes with dancing abstract animations.

Friday 2 – Monday 5 May, 9pm – Dawn daily

Hamilton House Gallery  
80 Stokes Croft, BSI 3QY  
[www.hamiltonhouse.org](http://www.hamiltonhouse.org)  
[www.pantherpantherav.tumblr.com](http://www.pantherpantherav.tumblr.com)





Charlie Godet-Thomas, *Untitled*

## Home presents Bending Light

Showcasing a variety of both physical and digital works from emergent artists Tristan Stevens, Charlie Godet-Thomas, Sebastian Jefford, Rachael Archibald, Menna Cominetti and Roman Liska, this group show marks the launch of a new series of exhibitions, peer group discussions and live events surrounding art and digital culture to be held at the legendary BV studios.

Sunday 4 – Monday 5 May, 12–5pm

BV Studios  
37 Philip Street, Bedminster, BS3 4EA  
[www.home-platform.com](http://www.home-platform.com)  
@HomePlatform

Please note this venue has restricted access.

## Bristol Biennial presents I'M STAYING Shaun C Badham

I'M STAYING is a statement of both provocation and affirmation. Shaun C Badham's neon artwork will travel around the city for a two-year period, addressing ideas of place and change, permanence and transition. Viewers are invited to vote online for the next location. With each new site, come new interpretations. Does anything stay the same in a city that grows and shifts beneath our feet?

I'M STAYING is the first open commission of Bristol Biennial 2014. The project is hosted by Arnolfini, and produced in partnership with Blink Giant Media.

Project launches Saturday 3 May at 9pm

Arnolfini  
16 Narrow Quay, BS1 4QA  
[www.bristolbiennial.co.uk](http://www.bristolbiennial.co.uk)  
@BristolBiennial #IMSTAYING



## Maximum Irony! Maximum Sincerity 1999–2003: Towards a Unified Theory of MI!MS Andy Holden

A major installation using film, music and large-scale sculpture to explore the output and legacy of MI!MS – an artistic movement founded by Holden and 4 friends when they were teenagers – which questions the boundaries between reality and fiction, and the nature of collaboration, communication and friendship. Andy Holden's band, the Grubby Mitts will play a live gig on Friday evening.

Friday 2 May, 6–9pm  
Saturday 3 – Monday 5 May, 11am–5pm  
Continues until Sunday 29 June

Spike Island Artspace  
133 Cumberland Road, BS1 6UX  
[www.spikeisland.org.uk](http://www.spikeisland.org.uk)  
@\_Spikelsland



## Spike Island: Open Studios

Spike Island's Open Studios weekend is an annual opportunity to explore the studios of over 70 artists, designers and other creative practitioners based here. Includes mini exhibitions, performances, film screenings, pop-up cafés and opportunities for all ages and abilities to make and buy their own art.

Friday 2 May, 6–9pm  
Saturday 3 – Monday 5 May, 11am–5pm

Spike Island Artspace  
133 Cumberland Road, BS1 6UX  
[www.spikeisland.org.uk](http://www.spikeisland.org.uk)  
@\_Spikelsland



Turn up from 9pm  
on Friday 2 May for  
a free night of music  
(Andrew Lloyd Webber  
anyone?) from your DJ,  
Andy Holden. See

p.18



Andy Holden, MI!MS, 2013

# Seek the unexpected

## Three public artworks you must see...

### Missorts Tony White

The city provides the backdrop to a new fiction. Ten location-triggered stories are set to a contemporary soundtrack. Memorable characters weave through the stories; the contemporary urban setting populated by scenes of lost love and by confessions whispered in your ear.

Visit [missorts.com](http://missorts.com) to download

This is an urban soundwork delivered directly to your smartphone as a mobile app\* – download and begin at St Mary Redcliffe Church, BS1 6RA.

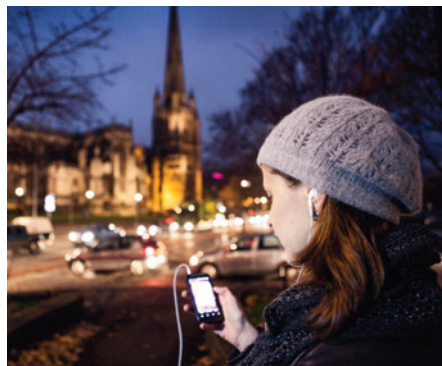


Photo by Max McClure, courtesy Situations

\*You will need a 3G, GPRS or WiFi data connection. This app works on Apple iPhone iOS 5 & Android v2.2, and above, only. If you do not have access to a smart phone, pre-loaded devices are available for short-term loan from two Bristol libraries: Bristol Central Library, College Green, BS1 5T and Bedminster Library, Bedminster Parade, BS3 4AG. This service is free but you will need to be a member of the library.



Photo by Jamie Woodley, courtesy Situations

### Follow Me Jeppe Hein

In the heart of Bristol's enchanting Royal Fort Gardens a mirrored labyrinth awaits you. See yourself and the surrounding landscape multiplied through a dizzying set of reflections and surprising optical illusions.

Royal Fort House, off Woodland Road, University of Bristol, BS8 1UH

Please note this artwork has restricted access.

### Ruined Hew Locke

In a quiet oasis in St. Pauls, lay the gravestones of old companies. Giants of trade and industry once uttered in reverent tones, now ruined or forgotten, pointing to the inevitable stories of the boom and bust of global trade.

Brunswick Cemetery Gardens, off Wilder Street and Brunswick Square, BS2 8QS



All three works were commissioned by Situations. Tony White and Hew Locke's work were produced as part of Bristol City Council's Art in the Public Realm programme and Jeppe Hein's work was commissioned to mark the centenary of the University of Bristol.

# Weekender Trails

## Take our lead and explore the city through art

We've come up with some suggested routes across the rich programme of works and events over the weekend. Pick up a trail wherever you want, chop and change where the mood takes you. The map overleaf is to be used in conjunction with the Art Map to guide you to some of the hidden gems of the programme.

### Families

The Weekender is family friendly. Across the trails and events, you'll find this symbol to indicate family activities such as We're Going On An Art Hunt and Scribble and Sketch.

## Here are our tips to get the most out of your visit:

### Start where you like...

You don't have to see everything – perhaps you'll see just two or three Turner masterpieces before a stop off at *A Concert for the Birds*

### Take your time.

Feel free to stand or sit in front of an artwork for as long as you like.

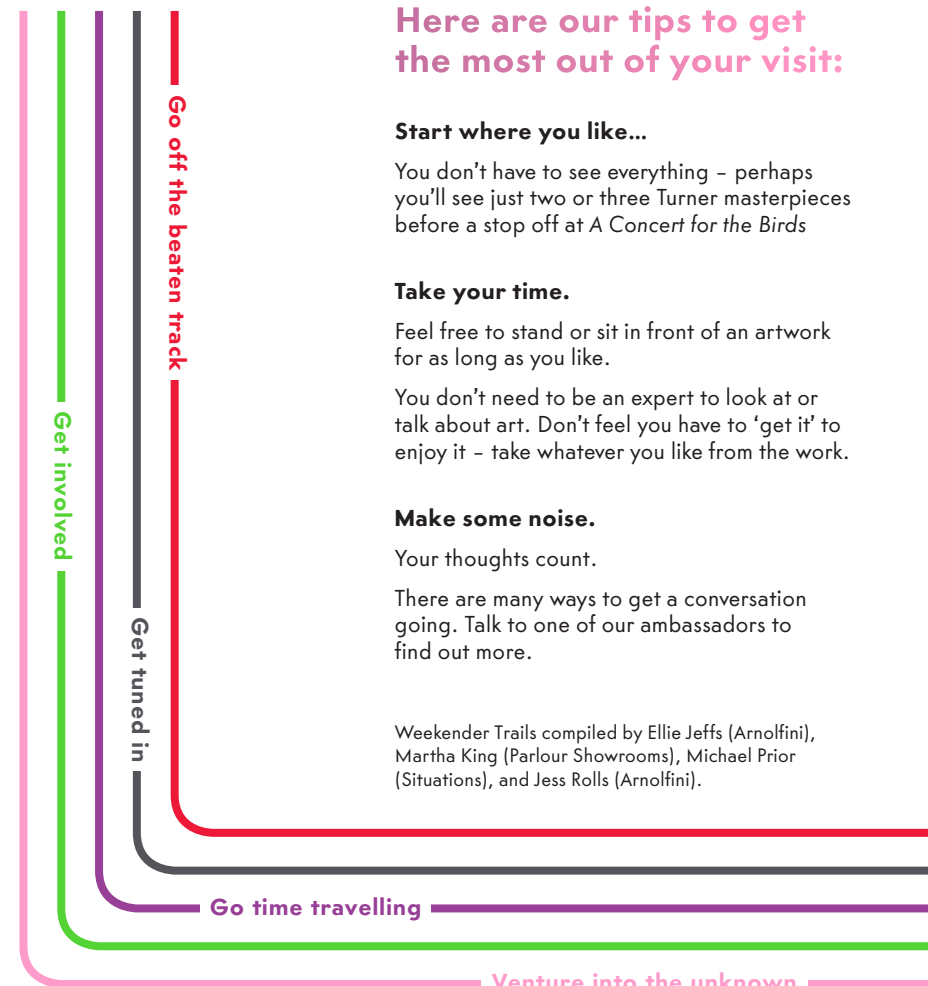
You don't need to be an expert to look at or talk about art. Don't feel you have to 'get it' to enjoy it – take whatever you like from the work.

### Make some noise.

Your thoughts count.

There are many ways to get a conversation going. Talk to one of our ambassadors to find out more.

Weekender Trails compiled by Ellie Jeffs (Arnolfini), Martha King (Parlour Showrooms), Michael Prior (Situations), and Jess Rolls (Arnolfini).



## Go off the beaten track

Discover art that lies beyond the well-trodden paths.

**Get tuned in** With headphones on or off, listen to the sounds of the city.

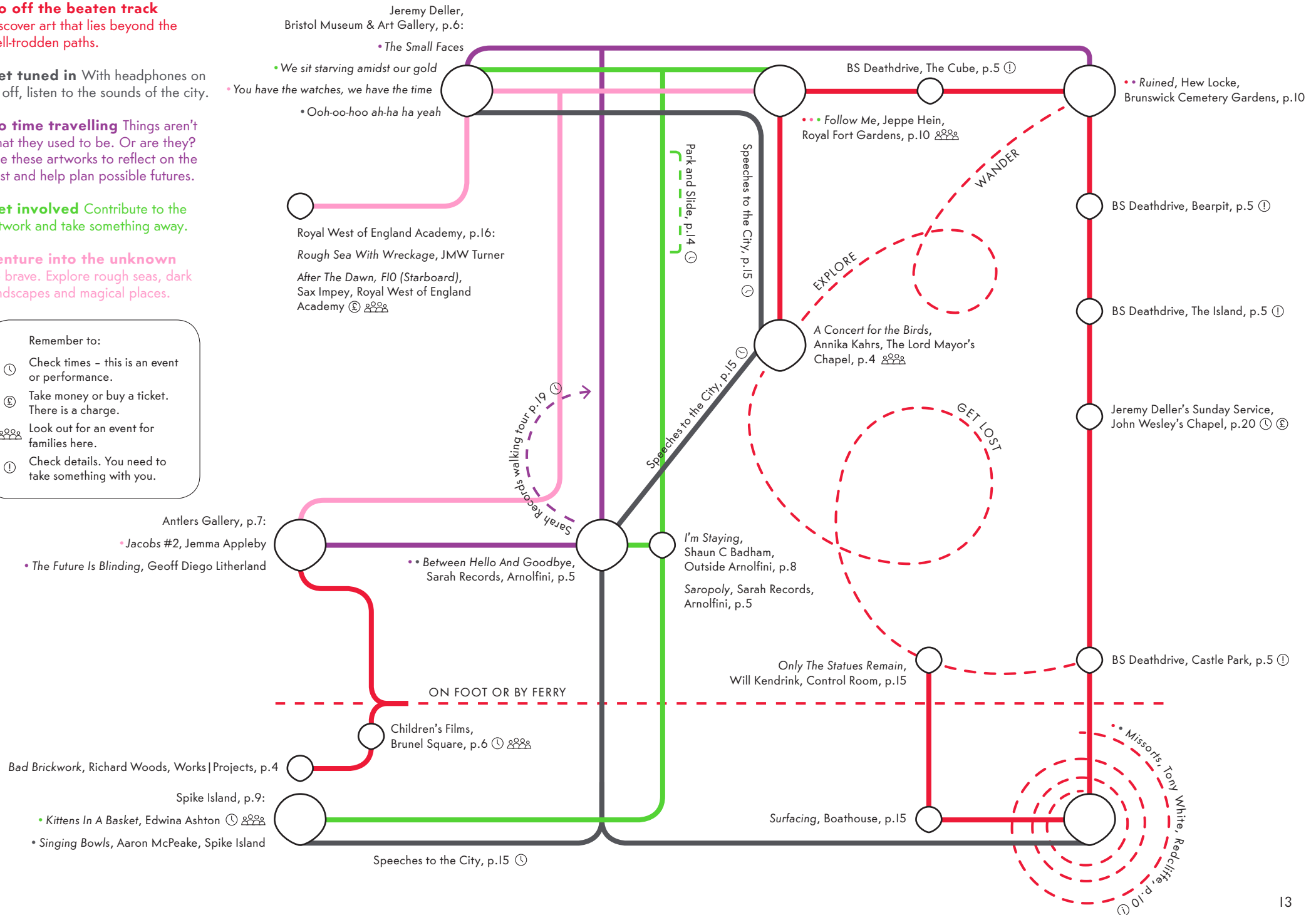
**Go time travelling** Things aren't what they used to be. Or are they? Use these artworks to reflect on the past and help plan possible futures.

**Get involved** Contribute to the artwork and take something away.

**Venture into the unknown** Be brave. Explore rough seas, dark landscapes and magical places.

Remember to:

- ⌚ Check times – this is an event or performance.
- 💰 Take money or buy a ticket. There is a charge.
- 👨👩👦 Look out for an event for families here.
- ⓘ Check details. You need to take something with you.





## Our Dream Today, Your Dream Tomorrow

A new public work  
by muf architecture/art

A temporary pavilion built by local young people to host live music, dance, a neighbourhood workout and a community bake.

Part of the larger Lockleaze capital environmental improvement project for Gainsborough Square.

Friday 2 May, 11am–3pm

Saturday 3 May, 12–6pm

Gainsborough Square, Lockleaze, BS7 9XA  
www.muf.co.uk www.aprb.co.uk  
@BristolCouncil

Commissioned by Bristol City Council and produced by muf: architecture/art with Learning Partnership West, the Vench, Jono Lewarne, Anton Goldenstein and Peter Beresford.

Sports demos,  
den making,  
a community bake  
and much more at  
the launch event on  
Saturday 3 May. See

p.19



## Park and Slide

A new public art project  
by Luke Jerram

Park and Slide is a water slide installed on Park Street in central Bristol, enabling people to navigate the city in a new way. This massive urban slide transforms the street and asks people to take a fresh look at the potential of their city and the possibilities for transformation. Imagine if there were permanent slides right across Bristol – this is our city, and maybe it's up to us to shape its future? Developed in partnership with Bristol City Council for Make Sundays Special, free tickets will be issued in advance from [www.bristolslide.com](http://www.bristolslide.com)

Sunday 4 May, 11am–5pm

Park Street, BS1 5JA  
www.lukejerram.com  
@lukejerram



## Speeches to the City

Produced by Martha King  
and Hannah Sullivan

Speeches to the city celebrates and provokes the act of speaking in public space, a programme of newly commissioned speeches will be heard across the city; igniting the use of public space as a site for personal political expression.

Performances will happen at specific times over the weekend on boxes located outside Weekener venues.

Friday 2 – Sunday 4 May

Locations and times will be posted on [www.speechestothe.city.wordpress.com](http://www.speechestothe.city.wordpress.com)  
You can also ask our Volunteer Ambassadors who will point you in the right direction!

A New Situationists project supported by Situations.

## Surfacing

Emma Ewan, Will Kendrick,  
Rebecca Ounstead

Encounter colourful, playful and curious objects and images, just off the beaten track in central Bristol. New and reconfigured artworks by UK artists Emma Ewan, Will Kendrick and Rebecca Ounstead will be installed in the waterside location of Redcliffe. In *Surfacing*, visual intrigue and intervention will both activate the area and seduce the senses.

Hand in Glove is a Bristol-based collective of artists and curators who produce nomadic projects which showcase and support emerging artist practice.

Saturday 3 – Monday 5 May, 12–5pm

Benjamin Perry Boathouse  
Redcliffe Wharf, Redcliffe, BS1 6TJ  
(inside and outside)  
and The Control Room, Redcliffe Bridge

[handinglove.org.uk](http://handinglove.org.uk)  
@HandinGloveNews #surfacing





© wave Wolverhampton Art Gallery

Henry Moore, *A Winter Gale in the Channel*, 1872, oil on canvas, 61 x 106.7 cm

### The Power of the Sea: Making Waves in British Art, 1790–2014

From the sublime spectacle of crashing waves to the vast expanse of the oceans, the sea has long fascinated artists in Britain. *The Power of the Sea* showcases responses to the subject by internationally-renowned contemporary artists alongside key historical works ranging from Constable and Turner to Nash and Wadsworth.

Friday 2 – Saturday 3 May, 10am–6pm  
 Sunday 4 May, 11am–5pm  
 Ticketed: Adult £5, Concessions £3.50

Special Bank Holiday opening with FREE entry\*  
 Monday 5 May, 11am – 5pm  
 Continues until Sunday 6 July

Royal West of England Academy  
 Queens Road, BS8 1PX  
[www.rwa.org.uk](http://www.rwa.org.uk)  
 @RWABristol



Look out for 'Sea Readings', a free event inspired by the exhibition in the RWA on Friday 2 May. See **p.18**

### Turner: Watercolours from the West JMW Turner

This intimate touring show will display eight works by JMW Turner. Held by collections in the West of England, these watercolours span the artist's career from student days to mature style. They include views of Bath, Bristol and the surrounding area. Among the highlights, the exhibition will feature Bristol's recently acquired watercolour by JMW Turner, *The Mouth of the Avon, near Bristol, seen from Cliffs below Clifton*.

Friday 2 May, 10am–5pm  
 Saturday 3 – Monday 5 May, 10am–6pm  
 Continues until Sunday 6 July

Bristol Museum & Art Gallery  
 Queens Road, BS8 1RL  
[www.bristolmuseums.org.uk](http://www.bristolmuseums.org.uk)  
 @bristol\_museum



This is the first exhibition delivered by 'Frameworks' a new partnership between Bristol Museums, Galleries and Archives, Holburne Museum in Bath, The Wilson (Cheltenham Art Gallery & Museum), Swindon Museum & Art Gallery, and the Victoria Art Gallery in Bath.

### Waking up a Shape Edwina Ashton, Anna Clawson & Nicole Ward, Lauren Gault & Lauren Printy Currie, Bryony Gillard, Sebastian Jefford, James Parkinson, Hannah Still

Bringing together a new generation of artists, this exhibition showcases the work of Bristol and Glasgow-based artists. Taking over the former Woodside Press building in Southville, this four-day exhibition will feature new works as well as performances by participating artists on Friday afternoon and Sunday evening.

Saturday 3 – Monday 5 May, 11am–5pm

The Woodside Press  
 22a Islington Road, BS3 1QB  
[www.spikeisland.org.uk/spike-associates](http://www.spikeisland.org.uk/spike-associates)

Please note this venue has restricted access.

Supported by Spike Associates in collaboration with Glasgow International and Bristol Art Weekender.

Fancy a drink with a difference? Woodside Press invite the curious to share a glass of milk! See **p.18**

EXTRAORDINARY ART GROWS FROM EXTRAORDINARY SUPPORT

JOIN

**PATRONS OF NEW ART BRISTOL**

AND HELP US TO REALISE ARTISTS' COMPELLING AND INSPIRATIONAL VISIONS

[NEWARTBRISTOL.ORG](http://NEWARTBRISTOL.ORG)

ARNOLFINI

SITUATIONS

Spike Island

IN ASSOCIATION WITH **WORKS|PROJECTS**

Supported using public funding by **ARTS COUNCIL ENGLAND**

# Events

## Friday 2 May

### Special preview talk – A Concert for the Birds

The Lord Mayor's Chapel, Park Street  
11.30am, FREE

Join artist Annika Kahrs, Claire Doherty, Director of Situations, and producer, Claire Feeley, for a special, behind-the-scenes preview in the Lord Mayor's Chapel. At 12pm, pianists Jean Hasse and Paul Israel will commence their hourly recitals of Franz Liszt's *Sermon to the Birds* accompanied by the choir of feathered singers.

### Waking up a Shape preview and performance

The Woodside Press  
3–6pm, FREE

Join the artists for a special afternoon preview of *Waking up a Shape*, a group exhibition shining a spotlight on artist activity in the city. Bryony Gillard will stage a one-off improvised performance using sound, text and action.

### Axolotl Milk Bar

The Woodside Press  
3–6pm, FREE

Edwina Ashton and her band of costumed creatures serve up tall glasses of milk in this pop-up bar at The Woodside Press.

### Music of MI!MS

Spike Island  
9pm, FREE

A Grubby Mitts DJ set saturated by the mood of MI!MS and featuring music ranging from happy hardcore to Andrew Lloyd Webber.

## Saturday 3 May

### The Greenhouse: A special Scribble and sketch and storytime session!

Royal West of England Academy  
10.30am – 1pm (Storytime at 11.30am)  
FREE with Exhibition Entry



Children's book illustrator and art workshop leader, Sarah Smith will be reading from her new book, *The Butterfly House*, which is released by Tate Publishing on 1 May. To tie in with the story, the theme of this month's Scribble and Sketch will be the greenhouse. Copies of Sarah's new book will be available from the RWA shop.

### Sarah Records Walking Tour

Arnolfini  
11am, FREE, Meet in Arnolfini foyer

Co-founder of Sarah Records, Clare Wadd, will be leading city walks in conjunction with local ramblers, Brunel Walking Group. The walks will take in some of the locations which gave the label's releases their names, and are a perfect opportunity to explore Bristol. The walks run for about an hour and a half (covering 3–4 miles).

### Sea Readings

Royal West of England Academy  
12pm, FREE with Exhibition Entry

As part of *The Power of the Sea* exhibition, the RWA are hosting a series of short readings on the theme of the sea, delivered in the exhibition spaces by a range of writers, lecturers and students from Bristol and Bath. Readers will include Dr Marie Mulvey-Roberts (Associate Professor in English Literature, UWE, Bristol), Dr Anna Farthing (Director, Harvest Heritage, Arts and Media) and Dr Peter Reason (Emeritus Professor, University of Bath). Texts will include *Moby Dick* and *Robinson Crusoe*.

### The Power of the Sea Gallery Walk and Talk with Janette Kerr and Andrew Hardwick

Royal West of England Academy  
12pm, FREE with Exhibition Entry

Join the exhibition curator and president of the RWA, Janette Kerr, and exhibiting artist Andrew Hardwick for an informal tour and discussion around *The Power of the Sea* exhibition. This is the perfect opportunity to explore some of the themes of the show, as well gaining an insight into how a large historical and contemporary exhibition is curated.

### Artist's BBQ & Tour

Antlers Gallery  
12–3pm, FREE (open to all)

Join the exhibiting artists for an informal afternoon lunch and tour of the exhibition.

### Our Dream Today, Your Dream Tomorrow Launch event

Gainsborough Square, Lockleaze, BS7 9XA  
From 12pm, FREE



A programme of free events to test the design of the temporary pavilion

- From 12pm: Community bake, bring your own dough or make and bake with us on site
- From 12pm: 'The Lockleaze Our Dream' team and muf-led workshop to find your inner den-maker
- From 2pm: Programme of live music, sports demonstration and community workout
- 4–4.30pm: 'The Lockleaze Our Dream' team with muf introduction and guided tour of the temporary pavilion with Q&A.

### Talk: Art and the Avon Gorge

Bristol Museum & Art Gallery  
2pm, FREE\*

As a teenager holidaying in Bristol, JMW Turner earned himself the nickname 'Prince of the Rocks' for the hours he spent climbing and painting in the Avon Gorge. Join Professor Sam Smiles as he discusses how the unique geology, landscape and history of the Gorge – and Turner's influence – have inspired further generations of artists.

\*Places to this event are limited, please pre-book on 0117 922 3571

### Bodies of Water Film Screening

Royal West of England Academy  
2–3.30pm, FREE with Exhibition Entry

Curated by artist film-maker Kayla Parker in response to *The Power of the Sea* exhibition, this programme of short films invites viewers to reflect upon their relationship with the waters that surround the British Isles. These films explore the effective and affective 'power of the sea', whose rhythms infiltrate our dreams and memories, pacifying our minds, absorbing and smoothing trauma.

Running time of film programme: 70 minutes

Introductory talk and Q+A discussion, after the screening: 20 minutes

Bookable event – please contact RWA on 0117 973 5129

### Hatch Experimental Drawing workshop

Royal West of England Academy  
2–5pm, FREE with Exhibition Entry

HATCH seeks an engagement around drawing in its many aspects: process and outcome, traditional and experimental, manual and mechanical, universal and deeply personal. We invite varied approaches – from those that encompass transcriptions of the known world to ephemeral interpretation and invention that endeavour to bridge us into the unknowable.

## Saturday 3 May (continued)

### Artist tours

Antlers Gallery  
3pm, FREE

Join the exhibiting artists, Karin Krommes, Geoff Diego Litherland and Jemma Appleby, for an informal tour of the exhibition.

### Surfacing (Hand in Glove) launch event with a performance by Rebecca Ounstead

Benjamin Perry Boathouse, Redcliffe Bridge  
4–5pm, FREE

### Sarah Records: In Conversation with Matt Haynes and Sarah Wadd

Arnolfini  
5.30pm, £3

To book: [www.arnolfini.org.uk/whatson/sarah-records](http://www.arnolfini.org.uk/whatson/sarah-records) or call Box Office on 0117 917 2300

### 'Home' launch event

BV Studios  
6pm, FREE

### My Secret World film screening and music event

Arnolfini  
7.30–10.30pm, £18/£16 concs

An evening screening of the new documentary about the label My Secret World will be previewed during a concert programme featuring performances by bands from the label: The Orchids, Secret Shine, Amelia and Rob (ex-Heavenly) & more.

To book: [www.arnolfini.org.uk/whatson/sarah-records](http://www.arnolfini.org.uk/whatson/sarah-records) or call Box Office on 0117 917 2300

### I'M STAYING Project Launch

Arnolfini  
9pm, FREE

### The Official Bristol Art Weekender Party

Arnolfini  
10pm–2am, FREE

Celebrate the inaugural Bristol Art Weekender. Party til late to a selection of Indie pop, Northern Soul and Motown classics and enjoy a very special all-vinyl 'C86' DJ set by Ian Watson of London-based club night, How Does It Feel To Be Loved?

## Sunday 4 May

### Sarah Records Walking Tour

See page 18 for details

### Public Art (Now) – Jeremy Deller's Sunday Service

The New Room, John Wesley's Chapel  
36 The Horsefair, BS1 3JE  
2–3.30pm, £4/£2.50 concs



Public Art Now is a national programme of talks, films, publications and workshops dedicated to showcasing and discussing the most dynamic forms of public art. At this inaugural launch event, Turner Prize winning artist Jeremy Deller challenges where, when and how art takes place.

Booking essential, visit:  
[www.jeremydeller.eventbrite.com](http://www.jeremydeller.eventbrite.com)

### Hatch Experimental Drawing

See page 19 for details  
Royal West of England Academy  
2–5pm, FREE with Exhibition Entry

### I'M STAYING artist talk

Reading Room, Arnolfini  
4pm, FREE

Join the artist Shaun C Badham and Bristol Biennial's Artistic Director Hannah Clark to discuss the ideas and motivations behind the project.

### Home

BV Studios, 6pm, FREE\*

Panel-led group discussion surrounding the exhibition and themes explored.

\*Space and seating limited, please email [charlotte@home-platform.com](mailto:charlotte@home-platform.com) to ensure a place.

### The Daydream Is What Reality Is (Others)

The Woodside Press  
6–8pm, FREE

Hannah Still curates an evening programme of screenings and performances as part of the exhibition *Waking up a Shape* at The Woodside Press, taking inspiration from the fiction of Brazilian writer Clarice Lispector.

## Monday 5 May

### Sarah Records Walking Tour

See page 18 for details

### We're going on an Art Hunt

Walking tours aimed at children and their families with performance artist Jenny Sanderson from *Playing Out/Bocadalupa*.



### A Concert for the Birds

Meet the birds and listen. Go on really listen. Listen more carefully than you have ever listened before. Meet outside the chapel at 12.40pm for the 1pm performance or 2.40pm for the 3pm performance of the piano recital that is part of this artwork. All welcome to stay for this.

12.40–1pm, 2.40–3pm, FREE  
Lord Mayor's Chapel, Park Street

### We're going on an Art Hunt

#### Follow Me

It's all too easy to lose yourself and then find yourself and then lose and gain a friend or two in this mirrored labyrinth. Explore the playful world of illusion and mirrors and look out for unexpected appearances and reflections. The garden surroundings of Royal Fort House are also a good place for a picnic.

1.30–1.50pm, 2.10–2.30pm  
Royal Fort Gardens, off Woodland Road, University of Bristol, BS8 1UJ

### Future Perfect

Hengrove Community Centre  
Fortfield Avenue, Hengrove BS14 9NX  
3–4.30pm, FREE\*



Future Perfect are hosting an event to celebrate and discuss Nils Norman's Future Perfect new public artwork in Hengrove, South Bristol. A talk by Norman will be followed by a tea party with delicious cakes baked by Whitchurch Afternoon WI, to celebrate the launch of a new theatre curtain for Hengrove Community Centre, which forms the first part of his commission.

Future Perfect is an ambitious public art programme for Hengrove featuring commissions by international artists Martino Gamper, Nils Norman and David Thorpe.

\*A free bus to the event will leave Spike Island at 2.30pm, please email [futureperfectbristol@gmail.com](mailto:futureperfectbristol@gmail.com) to register a place at the event and/or to book a lift.

### 'Overview' film screening

Antlers Gallery  
5pm, FREE

Join Antlers for a screening of Planetary Collective's film, Overview followed by Q&A with the directorial team.



## Visitor Information & Travel

The majority of Bristol Art Weekender exhibitions and events are all sited within central Bristol.

### Weekender events admission and booking details

FREE entry to exhibitions, installations and studios excluding RWA.

Some events may be ticketed. Please refer to programme information in this guide or online at [www.bristolartweekender.co.uk](http://www.bristolartweekender.co.uk)

### Getting to Bristol

By Train: First Great Western trains and Cross Country operate services into Bristol Temple Meads station. It's a 15 min walk from Temple Meads to the harbourside and Arnolfini. There is a taxi rank located directly outside of the station. The No.8/9 bus also runs from Temple Meads to the centre.

By Coach: National Express run coaches into central Bristol Coach Station. Megabus operates from Colston Street. Both are within 10 min walk to the harbourside.

By Plane: Bristol Airport is just 8 miles south of the city. A regular bus service, the Bristol International Flyer, links the airport to the city centre (30 min ride).

### Accommodation during your stay in Bristol

We are pleased to be able to offer visitors to Bristol Art Weekender a special Weekender accommodation rate with our hotel partner, Clifton Hotels.

Located within walking distance of all Weekender venues, this local independent chain offer accommodation to suit every budget. From single rooms to family rooms and suites, Clifton Hotels are sure to fill your Weekender needs.

To book: Please call 0117 946 7469 and quote "Art Weekender 2014" special rate. [www.cliftonhotels.com](http://www.cliftonhotels.com)


### Getting around Bristol

The majority of venues are within walking distance of each other – the best way to see the city. Refer to your Bristol Art Map, FREE in this guide, for route information and advice. You can download additional PDF copies of the Bristol Art Map online at [www.bristolartmap.com](http://www.bristolartmap.com)

In a rush? There is a central taxi rank on St Augustine's Parade. Otherwise we recommend calling V-Cars on 0117 940 9000

Further information for visitors  
Call Situations at 0117 930 4282  
[info@situations.org.uk](mailto:info@situations.org.uk)  
[www.bristolartweekender.co.uk](http://www.bristolartweekender.co.uk)

### Access

Many of the Bristol Art Weekender venues and sites have level access, these venues are indicated by 

If you need any assistance at a venue or site, please ask a front of house steward or seek out one of the Weekender's Ambassadors. The Weekender aims to be a fully accessible experience.

For detailed information on accessibility, please refer to our website [www.bristolartweekender.co.uk](http://www.bristolartweekender.co.uk)

## Credits & Thanks

The Weekender is produced by Situations in partnership with the city's primary visual arts venues, artist-run initiatives and arts producers, including Antlers Gallery, Arnolfini, Bristol Festival of Ideas, Bristol Museums Galleries & Archives, Bristol Biennial, BV Studios, Field Art Projects, Future Perfect, Hand in Glove, Royal West of England Academy, Spike Island, Spike Associates, The Parlour Showrooms and Works | Projects.

Bristol Art Weekender is produced by Situations, a Bristol-based arts producer who support artists to realise extraordinary ideas in unusual locations in the UK and internationally.

### SITUATIONS

**VNTLERS**  
THE NOMADIC GALLERY

**ARNOLFINI**

**BRISTOL  
FESTIVAL  
OF IDEAS**  
in association with  
**TheObserver**  
[www.ideasfestival.co.uk](http://www.ideasfestival.co.uk)

**Bristol  
Museums  
Galleries  
Archives**

**BRISTOL  
BIENNIAL**  
2014 CROSSING THE LINE



**Future Perfect**

Hand in Glove



**Spike Island** **WORKS|PROJECTS**

Funders, supporters & sponsors

We gratefully acknowledge the support of Arts Council England, Art Fund, Bristol City Council, Bristol Ferry, Bristol Festival of Ideas, Clifton Hotels, Frameworks and the Paul Hamlyn Foundation.



Supported using public funding by  
**ARTS COUNCIL  
ENGLAND**

**ArtFund**

**blink**  
GIANT MEDIA



**BRITISH  
COUNCIL**



**BRISTOL  
FESTIVAL  
OF IDEAS**  
in association with  
**TheObserver**  
[www.ideasfestival.co.uk](http://www.ideasfestival.co.uk)



**FRAMEWORKS**  
GREAT ART  
IN THE WEST

**phf** Paul Hamlyn  
Foundation

**Pear**  
Communications

**Redcliffe**  
Imaging Limited

Designed by Fraser Muggeridge studio

Taking place over the bank holiday weekend of 2-5 May, the inaugural Bristol Art Weekender is a four day programme celebrating art across the city and showcasing Bristol as one of the most vibrant and flourishing centres for art in the UK.

The Weekender's FREE\* programme of exhibition, events, talks and walks has been carefully selected to blend internationally significant artists with emerging talent, giving visitors a chance to experience a real diversity of exhibitions, public artworks, performances, interventions and studios over the weekend.

\* Some events may charge, please see inside programme for full details.